

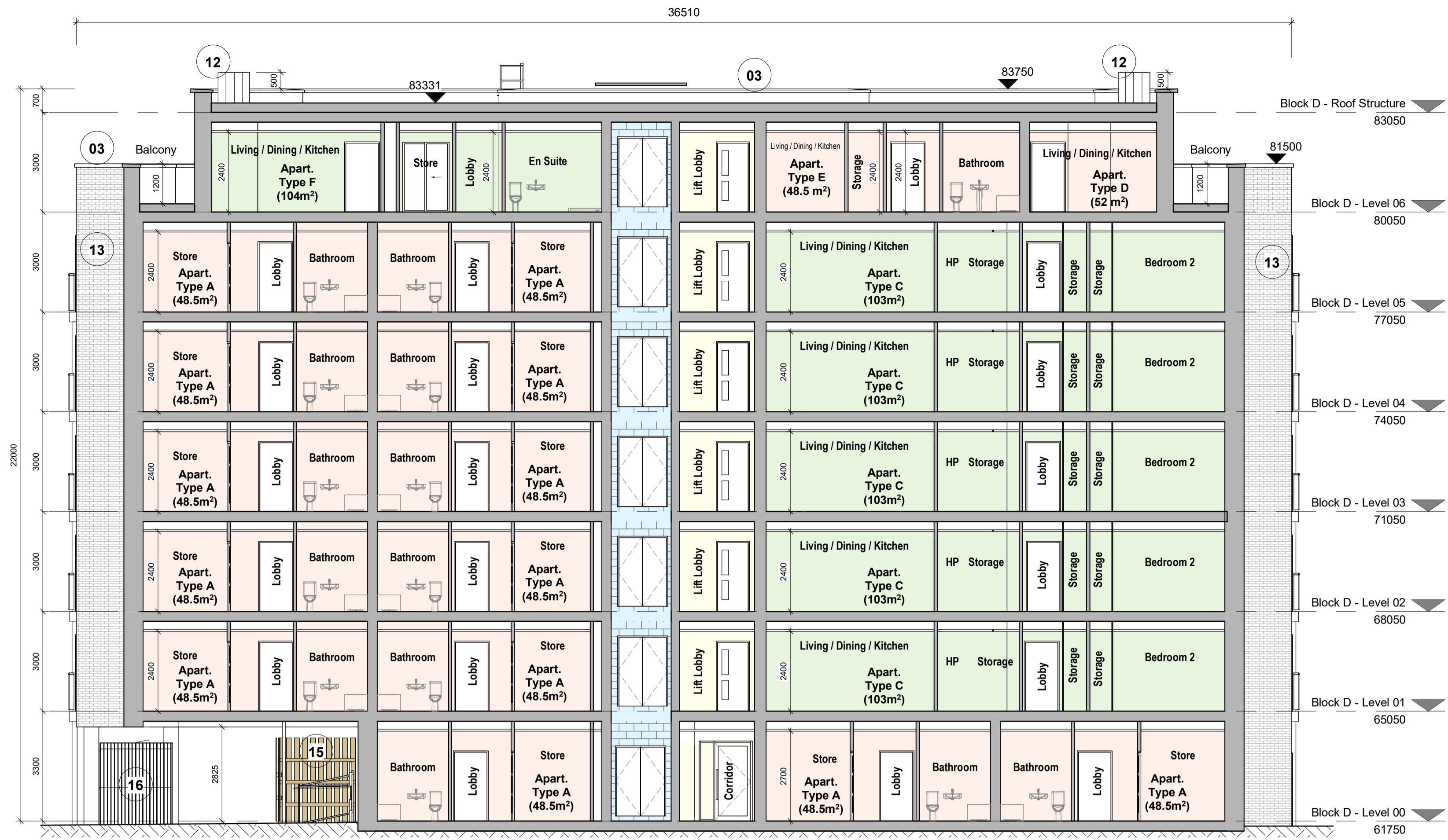
Area Type Legend

- 1-Bed
- 2-Bed
- 3-Bed
- Circulation
- Communal
- Creche
- Services

Finishes Type Legend

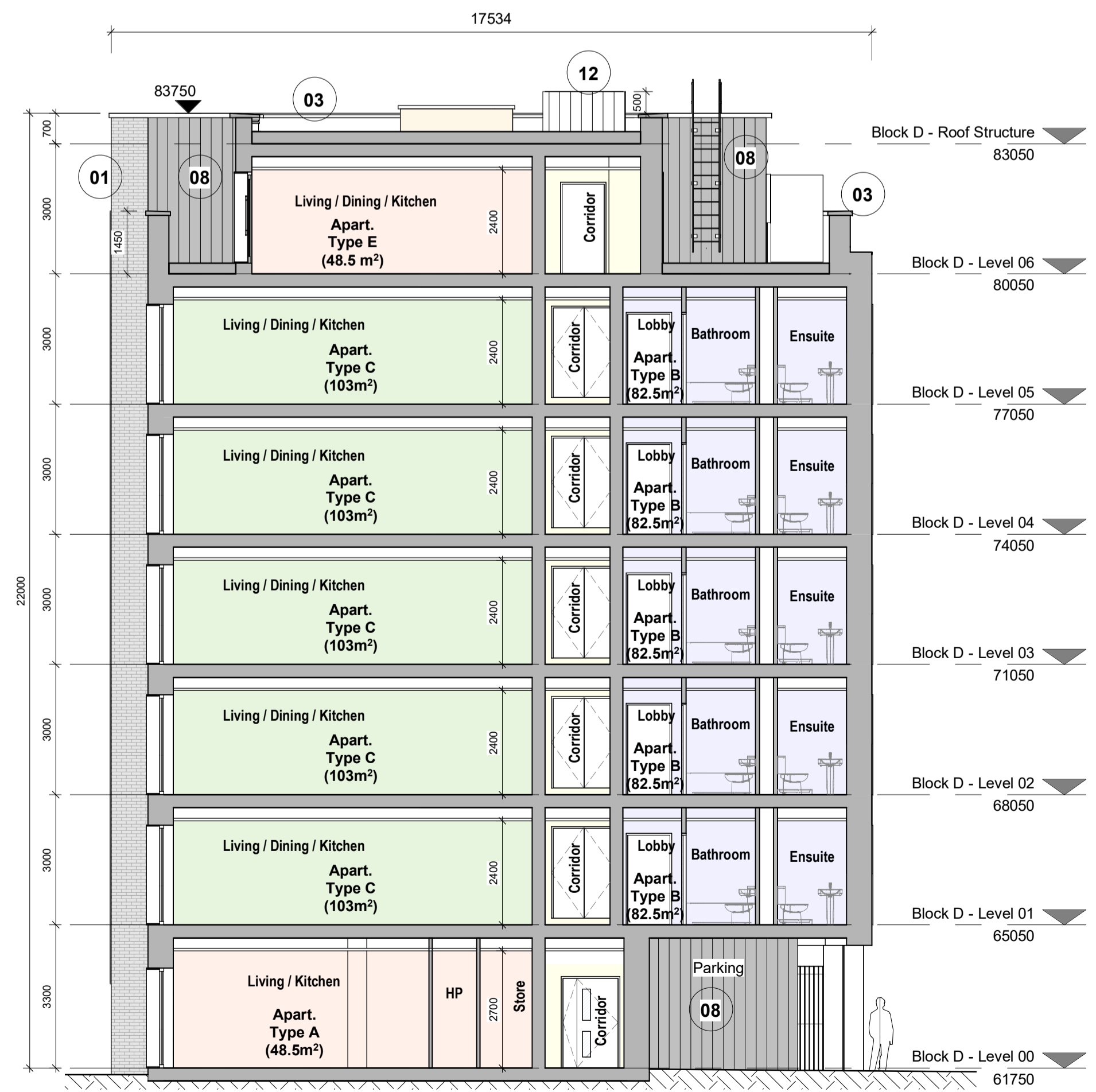
- 01 Selected Dark Coloured Hand-Cut Brick
- 02 Double Glazing Window / Door – dark colour frame
- 03 Dark Metal Capping
- 04 Selected Brown Coloured Hand-Cut Brick
- 05 Frosted Toughened Glass Balustrading
- 06 Metal Brise Soleil – dark-painted
- 07 Frosted Glazing To Stairwell
- 08 Insulated Metal Cladding Panels – dark grey
- 09 Dark-Painted Steel Doors
- 10 Green Roof
- 11 Stone Paving Slabs
- 12 Smoke Extract Shaft Vent
- 13 Selected Light Coloured Hand-Cut Brick
- 14 Metal RWP - dark grey
- 15 Treated and painted timber lattice fence bicycle enclosure
- 16 Galvanized and painted steel fence bicycle enclosure

NOTE: All materials to be approved prior to construction



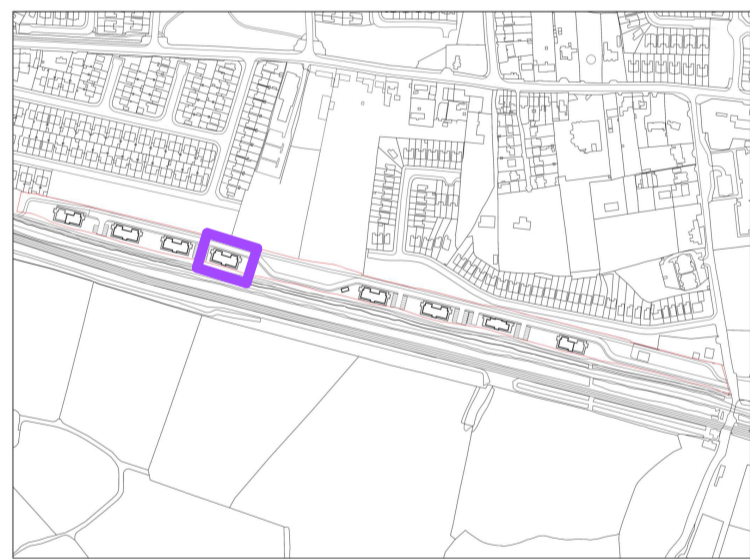
1 Block D - Section 01

1 : 100



2 Block D - Section 02

1 : 100



KEY PLAN - Block D (Building Type 4) Location

Rev	Description	Date	Dr by	App by
P01	Planning Submission	Jan 2021	EB	EB

Project Stage

PLANNING

Client:
OSH Ventures Limited

Project:
Built-to-Rent Residential Development
Old Schoolhouse Site (former Clonsilla School, Protected Structure RPS No. 700),
Porterstown Road, Kellystown, Clonsilla, Dublin 15.

Drawing Title:
Block D (Building Type 4) - GA Sections

Drawn	Checked	Paper Size	Scale	Date
GOB	EB		As indicated	Jan 2021

Project No.	Drawing No.	Revision
PE18105	002421	P01

File Name:
PE18105-CWO-04-DR-A-002421

Status:



No.1 Sarsfield Quay, Dublin 7, D07 R9FH
t: 01 518 0170 e: admin@cwoarchitects.ie
Dublin | Cork | Galway | London | UK & Europe +
www.cwoarchitects.ie

Please consider the environment before printing this sheet

