

**Area Type Legend**

- 1-Bed
- 2-Bed
- 3-Bed
- Circulation
- Communal
- Creche
- Services

**Finishes Type Legend**

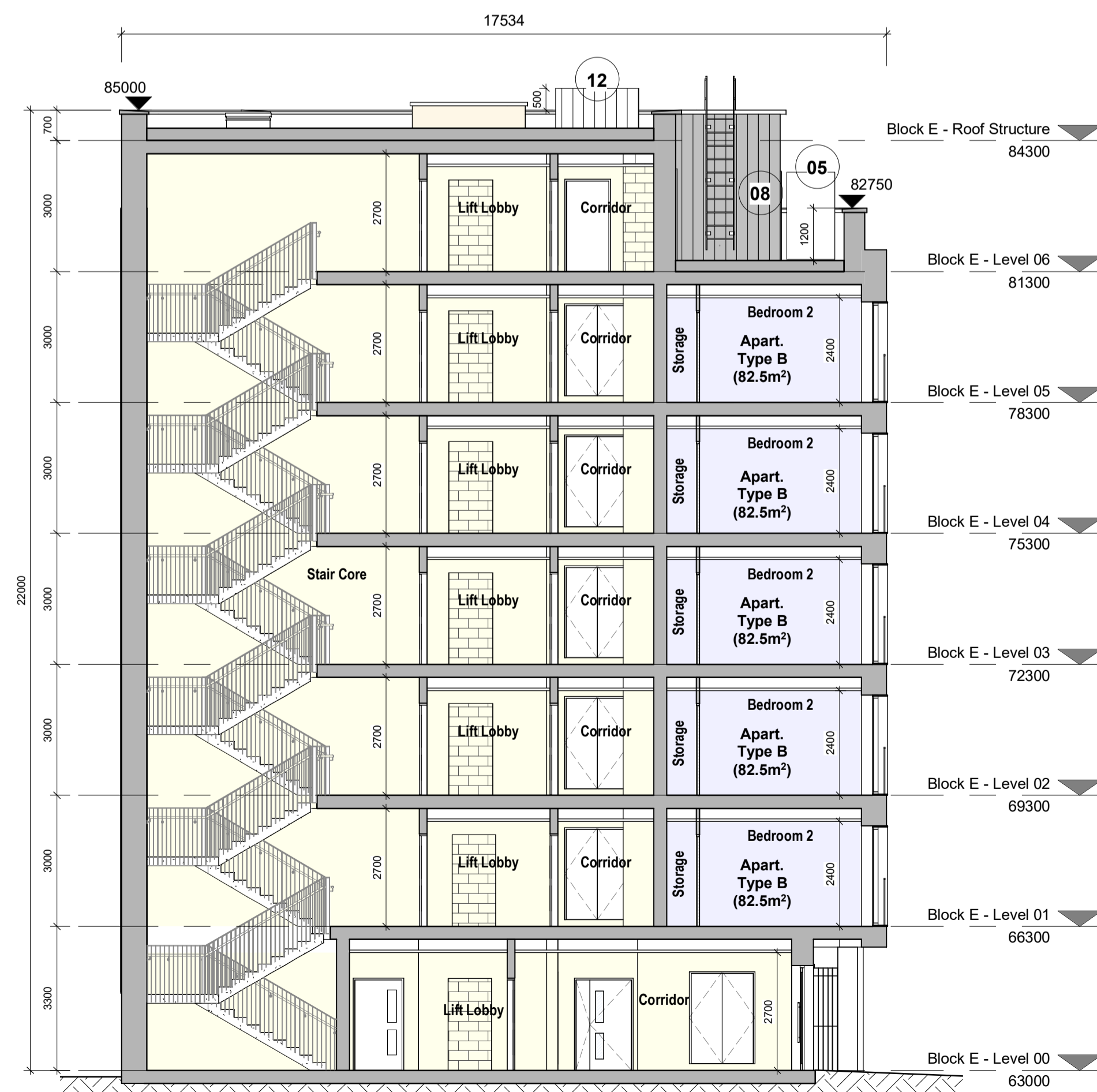
- 01 Selected Dark Coloured Hand-Cut Brick
- 02 Double Glazing Window / Door – dark colour frame
- 03 Dark Metal Capping
- 04 Selected Brown Coloured Hand-Cut Brick
- 05 Frosted Toughened Glass Balustrading
- 06 Metal Brise Soleil – dark-painted
- 07 Frosted Glazing To Stairwell
- 08 Insulated Metal Cladding Panels – dark grey
- 09 Dark-Painted Steel Doors
- 10 Green Roof
- 11 Stone Paving Slabs
- 12 Smoke Extract Shaft Vent
- 13 Selected Light Coloured Hand-Cut Brick
- 14 Metal RWP - dark grey
- 15 Treated and painted timber lattice fence bicycle enclosure
- 16 Galvanized and painted steel fence bicycle enclosure

NOTE: All materials to be approved prior to construction



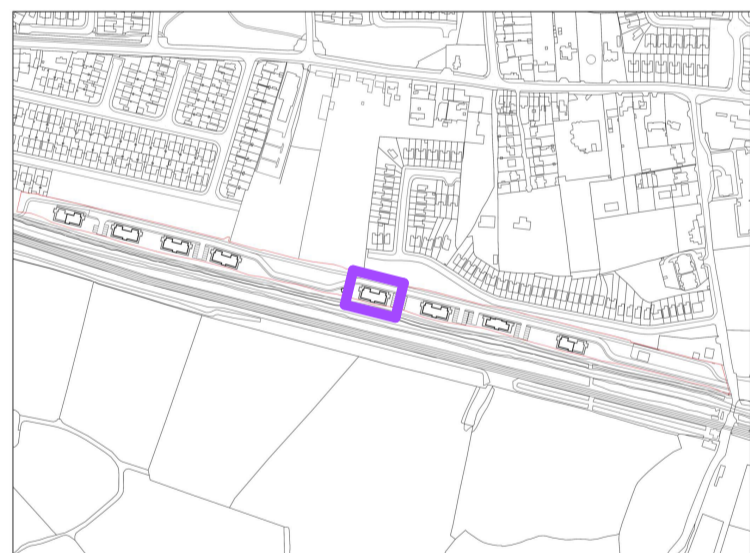
1 Block E - Section 01

1 : 100



2 Block E - Section 02

1 : 100



KEY PLAN - Block E (Building Type 5) Location

Rev	Description	Date	Dr	App by
P03	Planning Submission	Jan 2021	EB	EB
P02	Pre-Planning Submission	09/04/2020	EB	EB
P01	First Issue	25/03/2020	GOB	EB

Project Stage

**PLANNING**

Client: OSH Ventures Limited

Project: Built-to-Rent Residential Development

Old Schoolhouse Site (former Clonsilla School, Protected Structure RPS No. 700), Porterstown Road, Kellystown, Clonsilla, Dublin 15.

Drawing Title: Blocks E (Building Type 5) - GA Sections

Drawn	Checked	Paper Size	Scale	Date
GOB	EB	A3	As indicated	Jan 2021

Project No. PE18105 Drawing No. 002521 Revision P03

File Name: PE18105-CWO-05-ZZ-DR-A-002521

Status: A1 - Approved for Planning Stage



No.1 Sarsfield Quay, Dublin 7, D07 R9FH  
t: 01 518 0170 e: admin@cwoarchitects.ie  
Dublin | Cork | Galway | London | UK & Europe +  
www.cwoarchitects.ie

Please consider the environment before printing this sheet

