

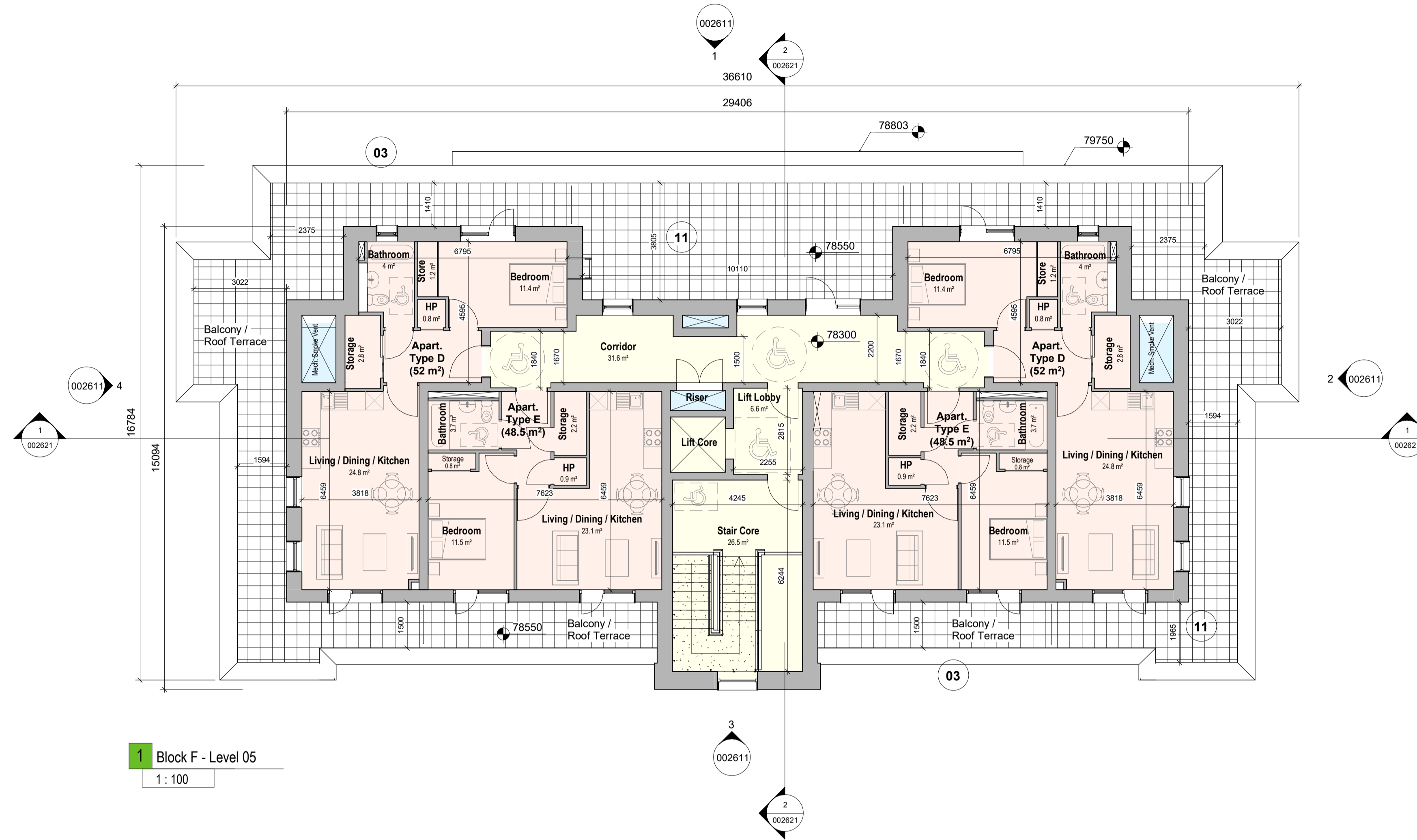
FOR DETAILED LAYOUTS OF APARTMENT TYPES, PLEASE REFER TO ARCHITECTURAL DRAWING Nos. 002020, 002021 & 002022

THE COPYRIGHT OF THIS DRAWING IS VESTED WITH CW O'BRIEN ARCHITECTS LIMITED AND MUST NOT BE COPIED OR REPRODUCED WITHOUT THE CONSENT OF THE COMPANY.

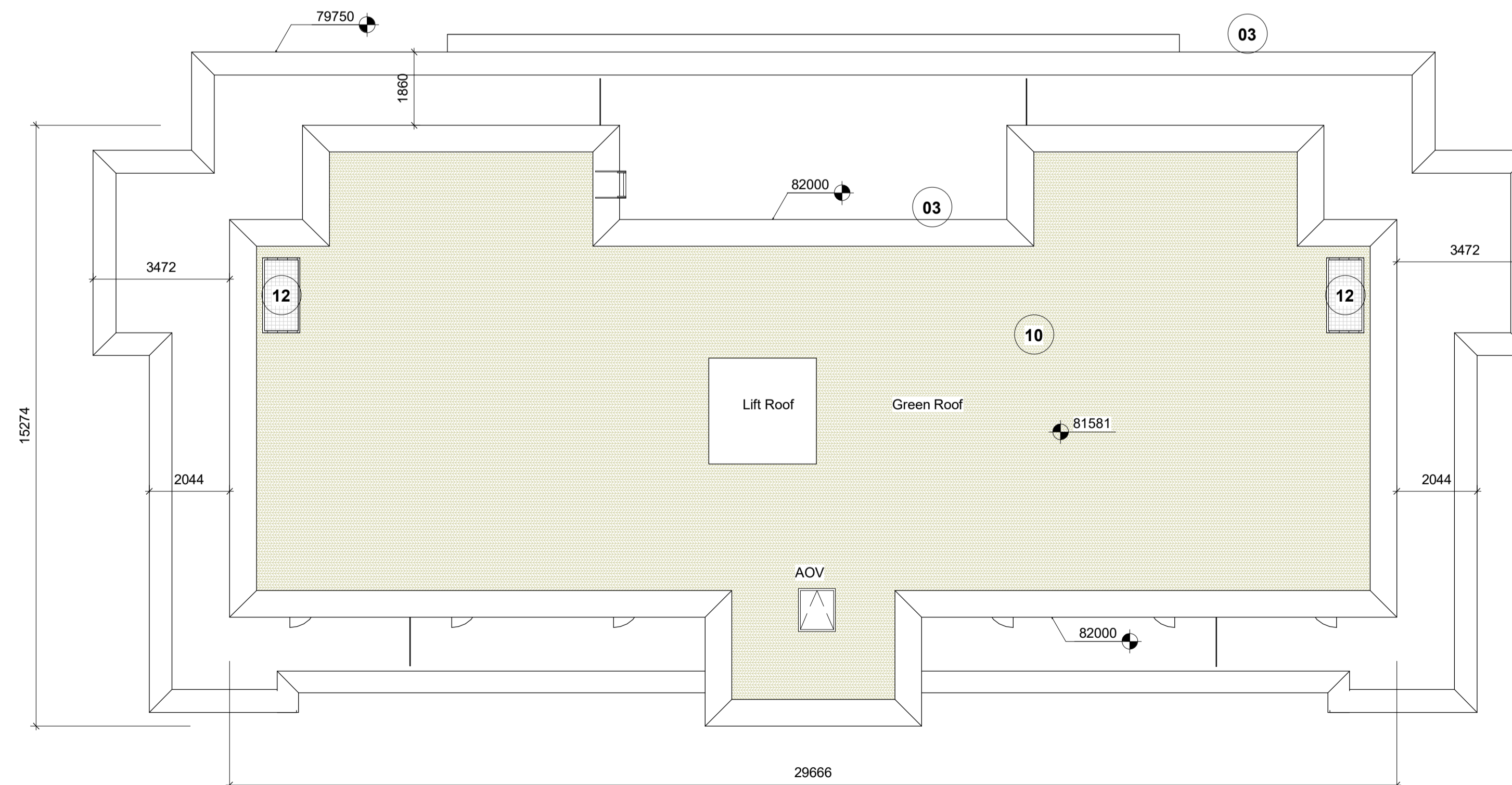
FIGURED DIMENSIONS ONLY TO BE TAKEN FROM THIS DRAWING. DO NOT SCALE.

ALL CONTRACTORS MUST VISIT THE SITE AND BE RESPONSIBLE FOR CHECKING ALL SETTING OUT DIMENSIONS AND NOTIFYING THE ARCHITECT OF ANY DISCREPANCIES PRIOR TO ANY MANUFACTURE OR CONSTRUCTION WORK.

NOTES:



1 Block F - Level 05  
1: 100



2 Block F - Roof Plan  
1: 100

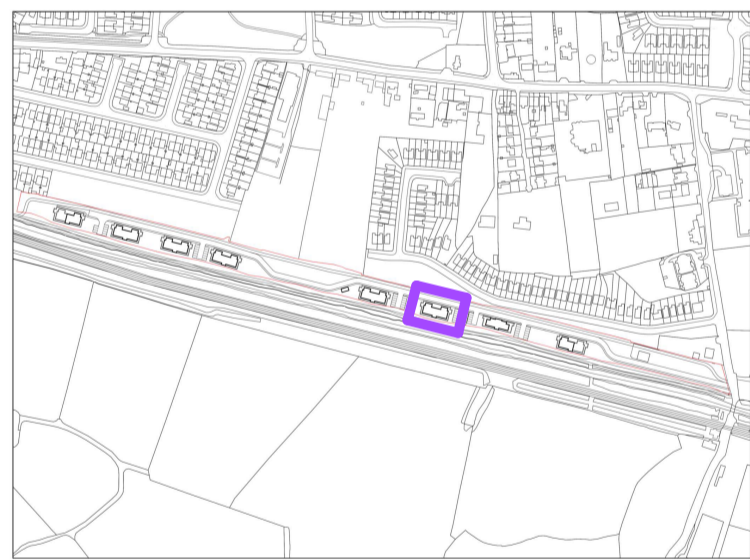
**Area Type Legend**

- 1-Bed
- 2-Bed
- 3-Bed
- Circulation
- Communal
- Creche
- Services

**Finishes Type Legend**

- 01 Selected Dark Coloured Hand-Cut Brick
- 02 Double Glazing Window / Door – dark colour frame  
Dark Metal Capping
- 03 Selected Brown Coloured Hand-Cut Brick
- 04 Frosted Toughened Glass Balustrading
- 05 Metal Brise Soleil – dark-painted
- 06 Frosted Glazing To Stairwell
- 07 Insulated Metal Cladding Panels – dark grey
- 08 Dark-Painted Steel Doors
- 09 Green Roof
- 10 Stone Paving Slabs
- 11 Smoke Extract Shaft Vent
- 12 Selected Light Coloured Hand-Cut Brick
- 13 Metal RWP - dark grey
- 14 Treated and painted timber lattice fence  
bicycle enclosure
- 15 Galvanized and painted steel fence bicycle  
enclosure

NOTE: All materials to be approved prior to construction



KEY PLAN - Block F (Building Type 6) Location

Rev	Description	Date	Dr by	App by
P01	Planning Submission	Jan 2021	EB	EB

Project Stage

**PLANNING**

Client:  
OSH Ventures Limited

Project:  
Built-to-Rent Residential Development  
Old Schoolhouse Site (former Clonsilla  
School, Protected Structure RPS No. 700),  
Porterstown Road, Kellystown, Clonsilla,  
Dublin 15.

Drawing Title:  
Block F (Building Type 6) - GA Plans, Part 2

Drawn	Checked	Paper Size	Scale	Date
GOB	EB	As indicated	As indicated	Jan 2021

Project No. PE18105  
Drawing No. 002602  
Revision P01

Status:  
**A1 - Approved for Planning Stage**



No.1 Sarsfield Quay, Dublin 7, D07 R9FH  
t: 01 518 0170 e: admin@cwoarchitects.ie  
Dublin | Cork | Galway | London | UK & Europe +  
www.cwoarchitects.ie

Please consider the environment before printing this sheet

