

FOR DETAILED LAYOUTS OF APARTMENT TYPES, PLEASE REFER TO ARCHITECTURAL DRAWING Nos. 002020, 002021 & 002022

THE COPYRIGHT OF THIS DRAWING IS VESTED WITH CW O'BRIEN ARCHITECTS LIMITED AND MUST NOT BE COPIED OR REPRODUCED WITHOUT THE CONSENT OF THE COMPANY.

FIGURED DIMENSIONS ONLY TO BE TAKEN FROM THIS DRAWING. DO NOT SCALE.

ALL CONTRACTORS MUST VISIT THE SITE AND BE RESPONSIBLE FOR CHECKING ALL SETTING OUT DIMENSIONS AND NOTIFYING THE ARCHITECT OF ANY DISCREPANCIES PRIOR TO ANY MANUFACTURE OR CONSTRUCTION WORK.

NOTES:

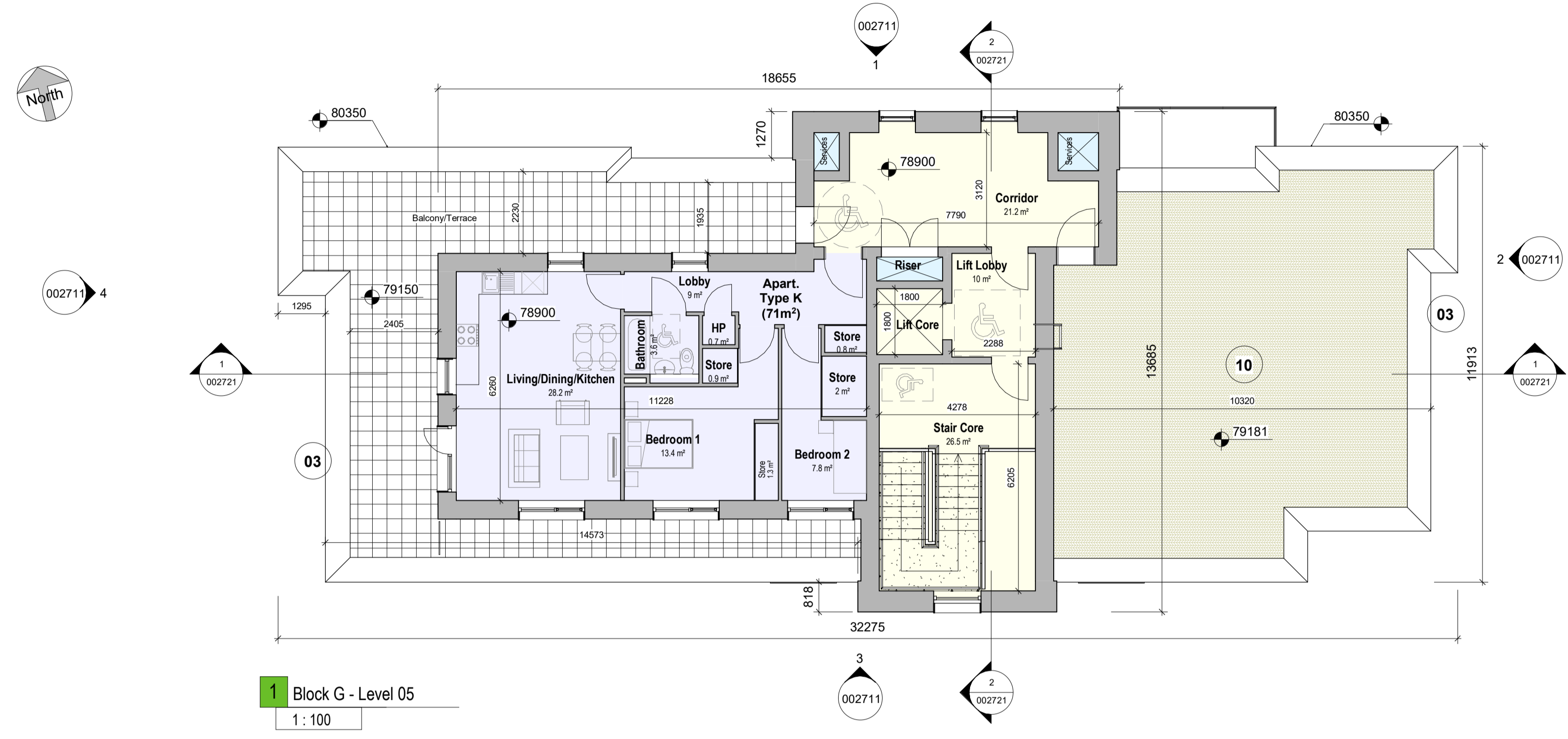
Area Type Legend

- 1-Bed
- 2-Bed
- 3-Bed
- Circulation
- Communal
- Creche
- Services

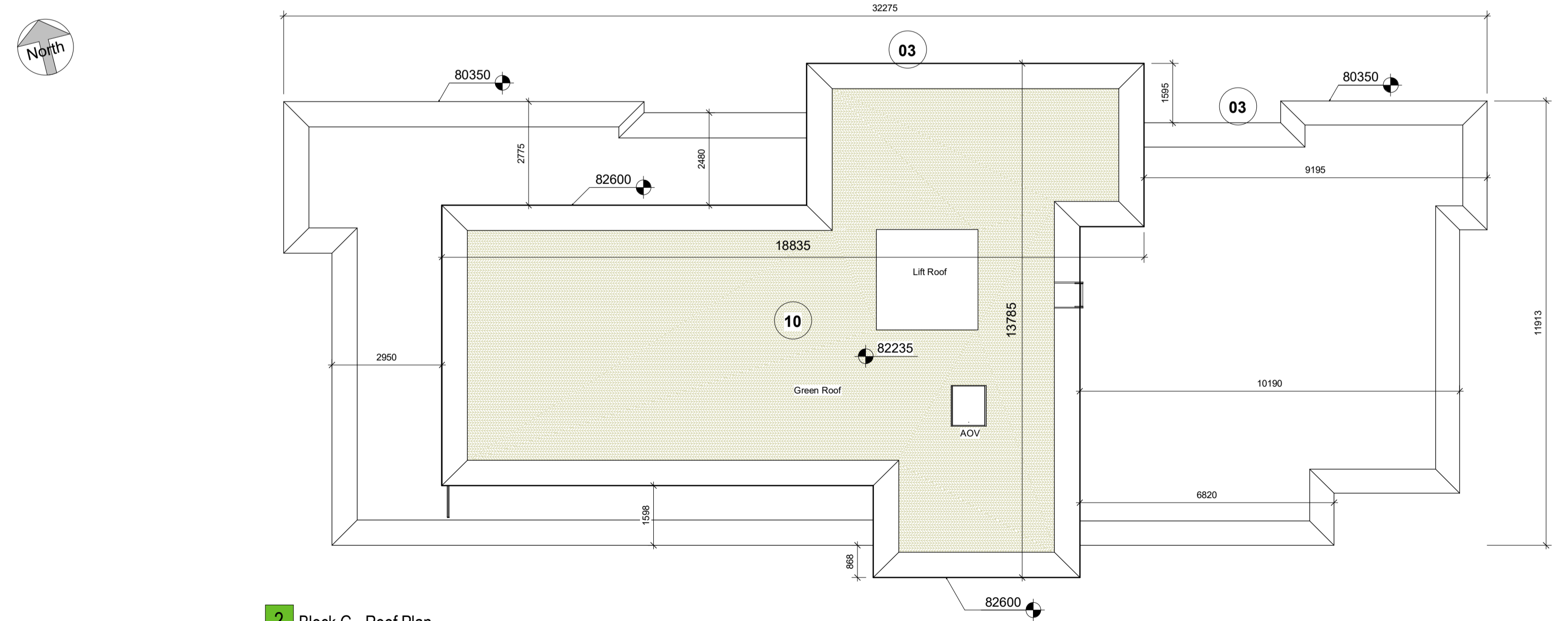
Finishes Type Legend

- 01 Selected Dark Coloured Hand-Cut Brick
- 02 Double Glazing Window / Door – dark colour frame
- 03 Dark Metal Capping
- 04 Selected Brown Coloured Hand-Cut Brick
- 05 Frosted Toughened Glass Balustrading
- 06 Metal Brise Soleil – dark-painted
- 07 Frosted Glazing To Stairwell
- 08 Insulated Metal Cladding Panels – dark grey
- 09 Dark-Painted Steel Doors
- 10 Green Roof
- 11 Stone Paving Slabs
- 12 Smoke Extract Shaft Vent
- 13 Selected Light Coloured Hand-Cut Brick
- 14 Metal RWP - dark grey
- 15 Treated and painted timber lattice fence bicycle enclosure
- 16 Galvanized and painted steel fence bicycle enclosure

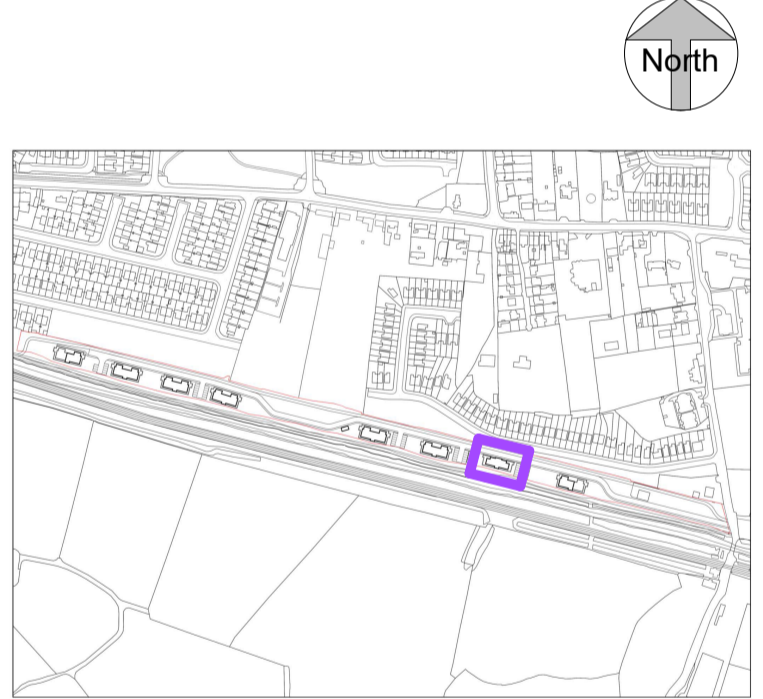
NOTE: All materials to be approved prior to construction



1 Block G - Level 05
1 : 100



2 Block G - Roof Plan
1 : 100



KEY PLAN - Block G (Building Type 7) Location

Rev	Description	Date	Dr by	App by
P03	Planning Submission	Jan 2021	EB	EB
P02	Pre-Planning Submission	09/04/2020	EB	EB
P01	First Issue	25/03/2020	GOB	EB

PLANNING

Client:
OSH Ventures Limited

Project:
Built-to-Rent Residential Development
Old Schoolhouse Site (former Clonsilla School, Protected Structure RPS No. 700),
Porterstown Road, Kellystown, Clonsilla,
Dublin 15.

Drawing Title:
Block G (Building Type 7) - GA Floor Plans, Part 2

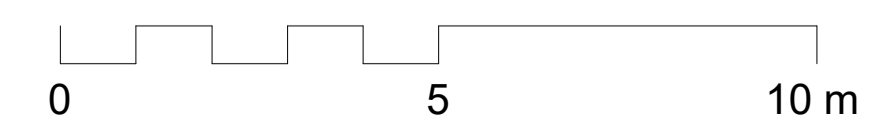
Drawn	Checked	Paper Size	Scale	Date
GOB	EB	A3	As indicated	Jan 2021

Project No. PE18105
Drawing No. 002702
Revision P03

Status:
A1 - Approved for Planning Stage



No.1 Sarsfield Quay, Dublin 7, D07 R9FH
t: 01 518 0170 e: admin@cwoarchitects.ie
Dublin | Cork | Galway | London | UK & Europe +
www.cwoarchitects.ie



Please consider the environment before printing this sheet