

FOR DETAILED LAYOUTS OF APARTMENT TYPES, PLEASE REFER TO ARCHITECTURAL DRAWING Nos. 002020, 002021 & 002022

FOR SITE LAYOUTS OF CAR AND BICYCLE EXTERNAL PARKING, PLEASE REFER TO ARCHITECTURAL DRAWING No. 002008

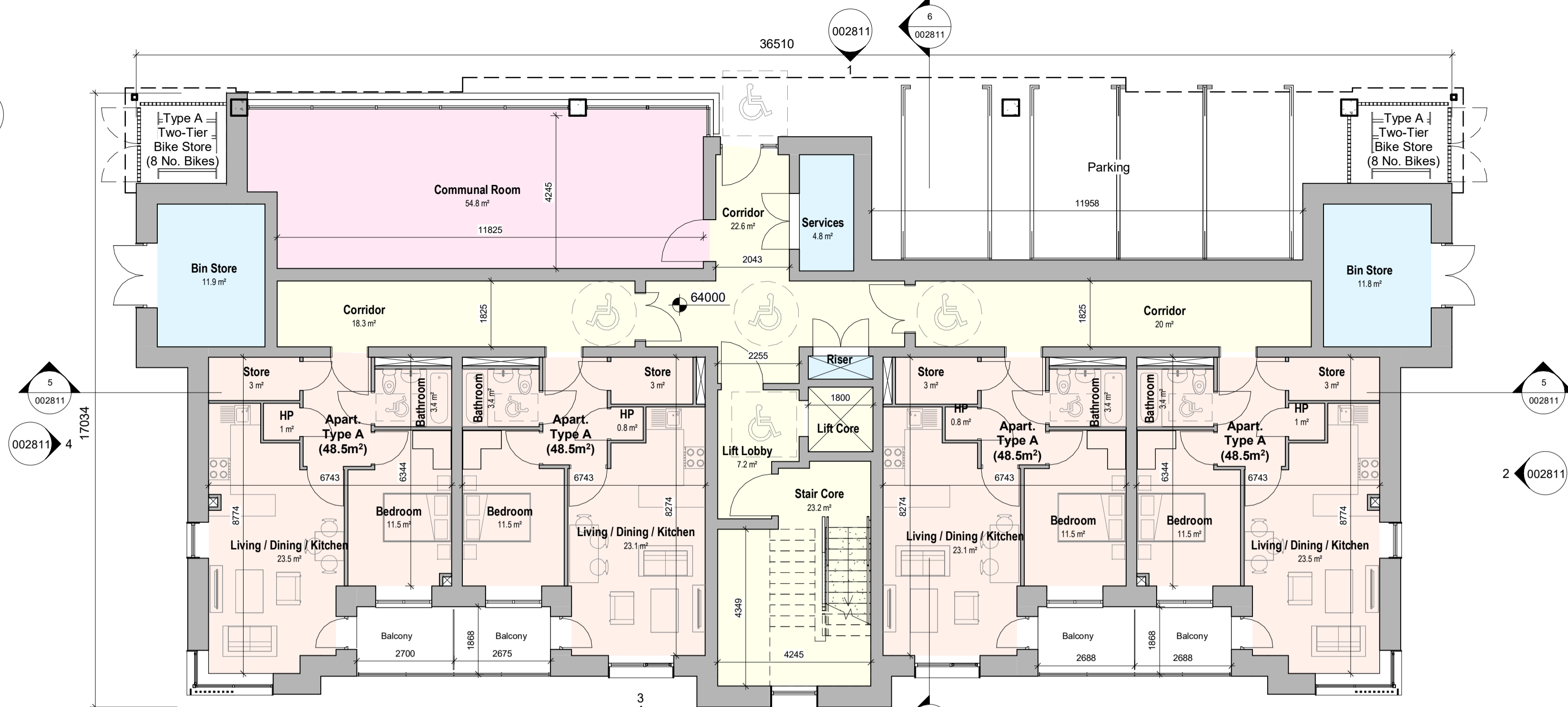
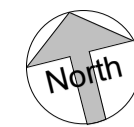
Area Type Legend

- 1-Bed
- 2-Bed
- 3-Bed
- Circulation
- Communal
- Creche
- Services

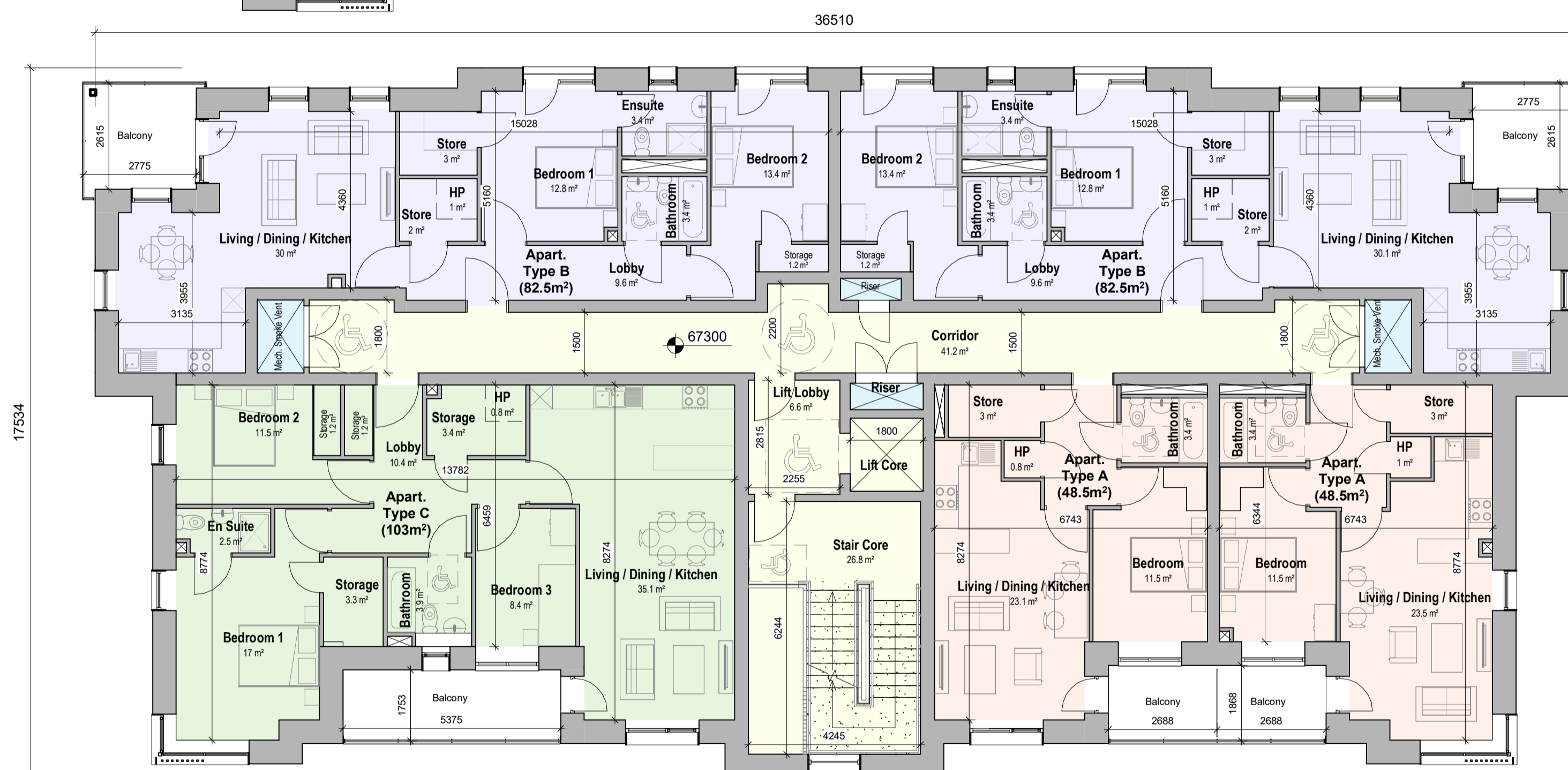
Finishes Type Legend

- 01 Selected Dark Coloured Hand-Cut Brick
- 02 Double Glazing Window / Door – dark colour frame
- 03 Dark Metal Capping
- 04 Selected Brown Coloured Hand-Cut Brick
- 05 Frosted Toughened Glass Balustrading
- 06 Metal Brise Soleil – dark-painted
- 07 Frosted Glazing To Stairwell
- 08 Insulated Metal Cladding Panels – dark grey
- 09 Dark-Painted Steel Doors
- 10 Green Roof
- 11 Stone Paving Slabs
- 12 Smoke Extract Shaft Vent
- 13 Selected Light Coloured Hand-Cut Brick
- 14 Metal RWP - dark grey
- 15 Treated and painted timber lattice fence bicycle enclosure
- 16 Galvanized and painted steel fence bicycle enclosure

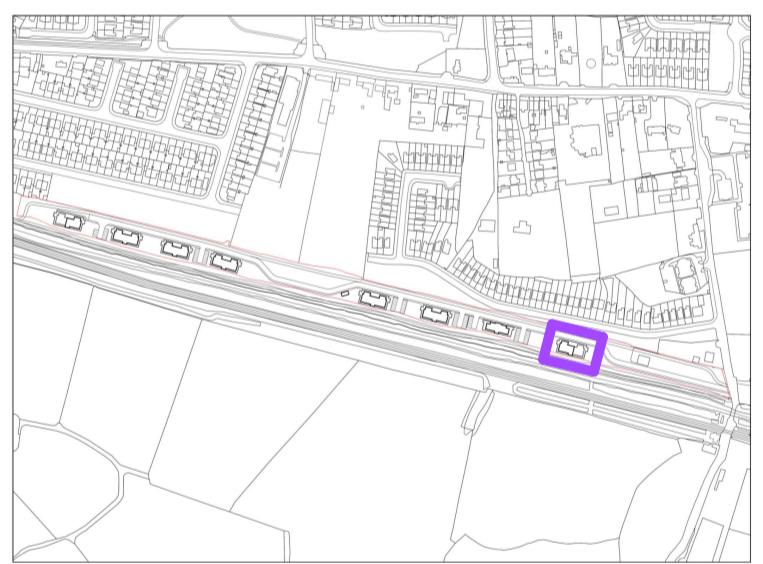
NOTE: All materials to be approved prior to construction



1 Block H - Level 00
1: 100

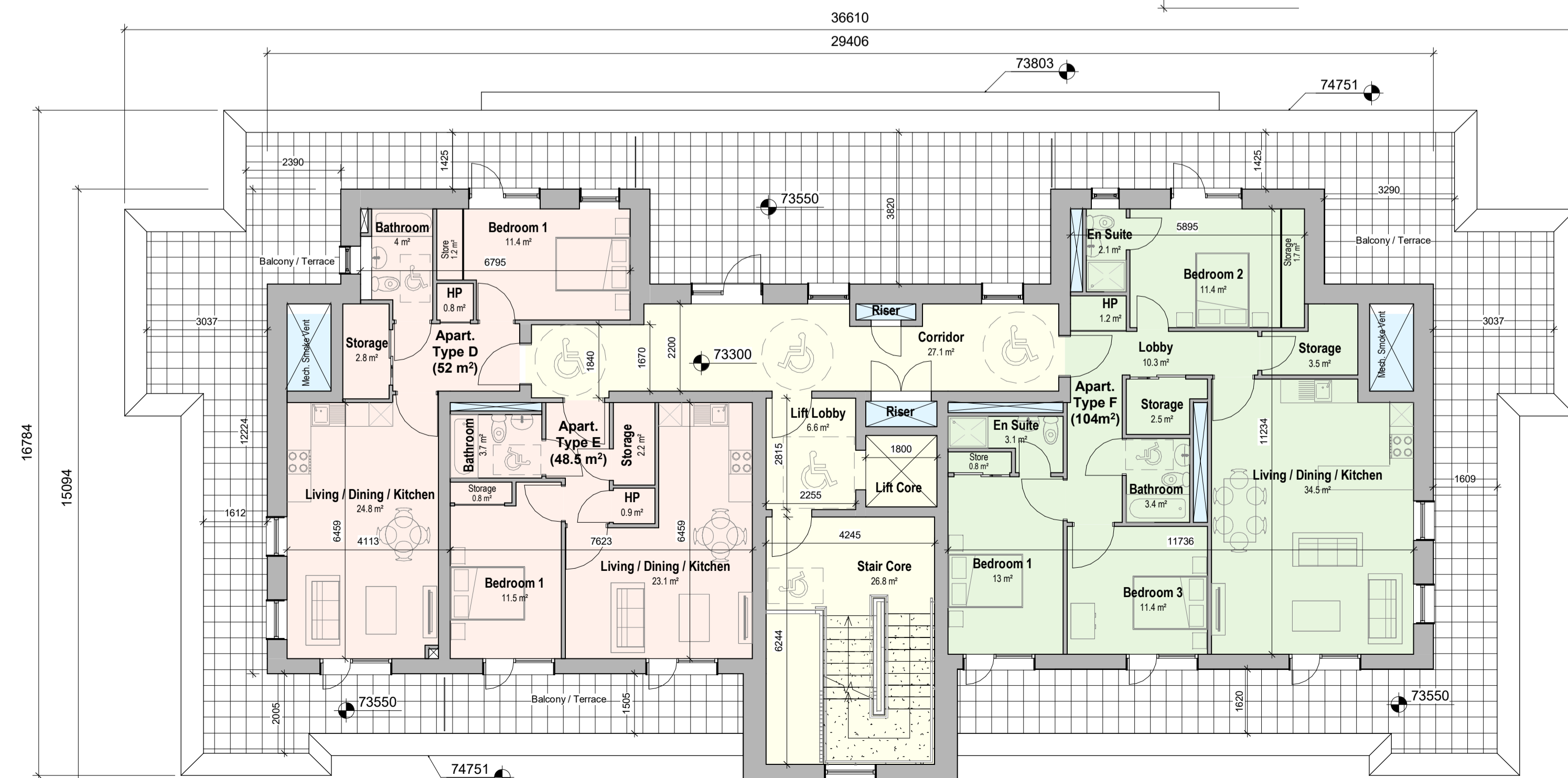


2 Block H - Levels 01 to 02 Incl.
1: 100



KEY PLAN - Block H (Building Type 8) Location

3 Block H - Level 03
1: 100



P03	Planning Submission	Jan 2021	EB	EB
P02	Pre-Planning Submission	09/04/2020	EB	EB
P01	First Issue	25/03/2020	GOB	EB
Rev	Description	Date	Dr	App

PLANNING

Client:
OSH Ventures Limited

Project:
Built-to-Rent Residential Development
Old Schoolhouse Site (former Clonsilla School, Protected Structure RPS No. 700),
Porterstown Road, Kellystown, Clonsilla, Dublin 15.

Drawing Title:
Block H (Building Type 8) - GA Plans, Part 1

Drawn	Checked	Paper Size	Scale	Date
GOB	EB	As indicated	As indicated	Jan 2021
Project No.	Drawing No.	Revision		
PE18105	002801	P03		

Status:
A1 - Approved for Planning Stage



No.1 Sarsfield Quay, Dublin 7, D07 R9FH
t: 01 518 0170 e: admin@cwoarchitects.ie
Dublin | Cork | Galway | London | UK & Europe +
www.cwoarchitects.ie

