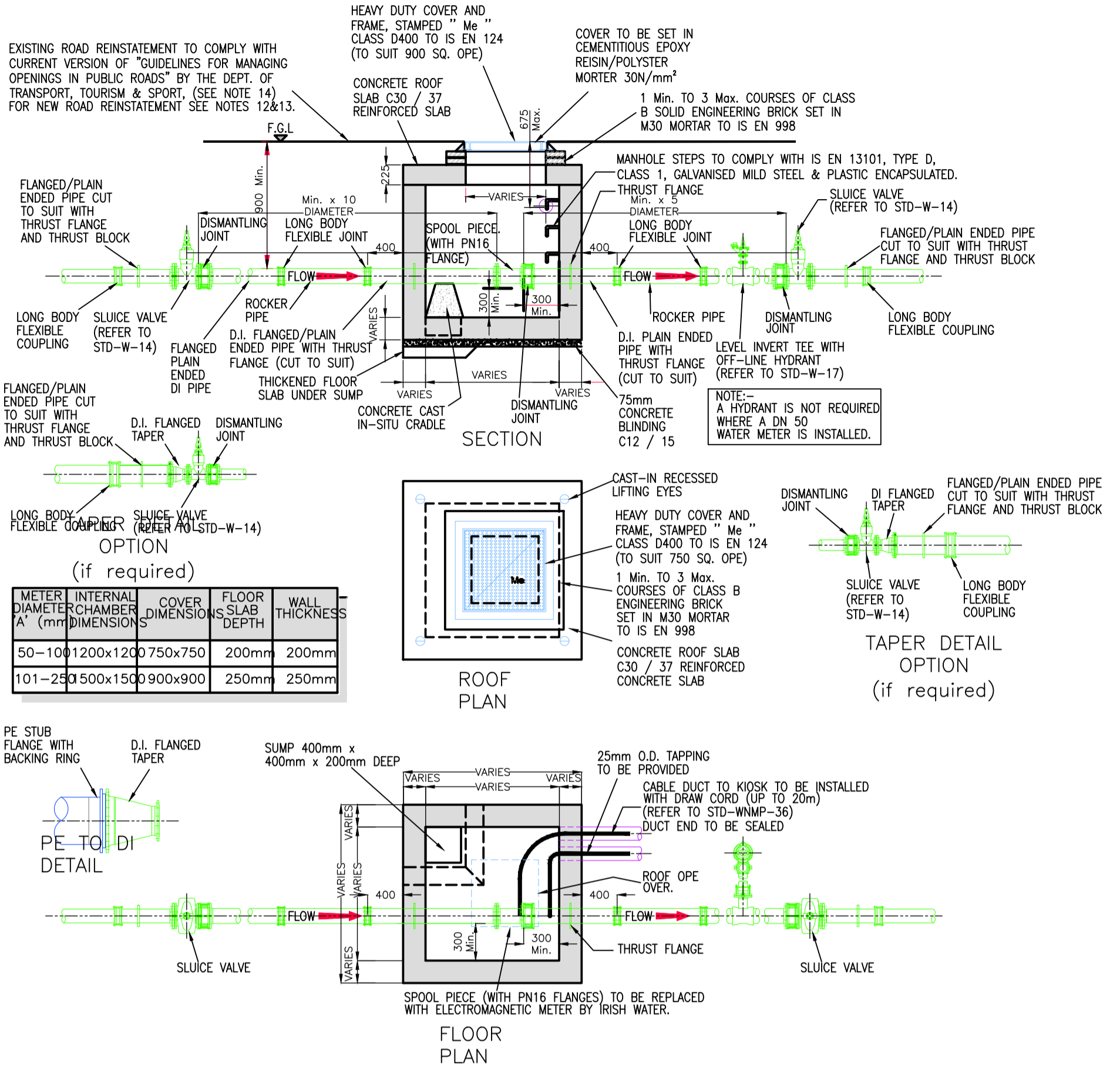


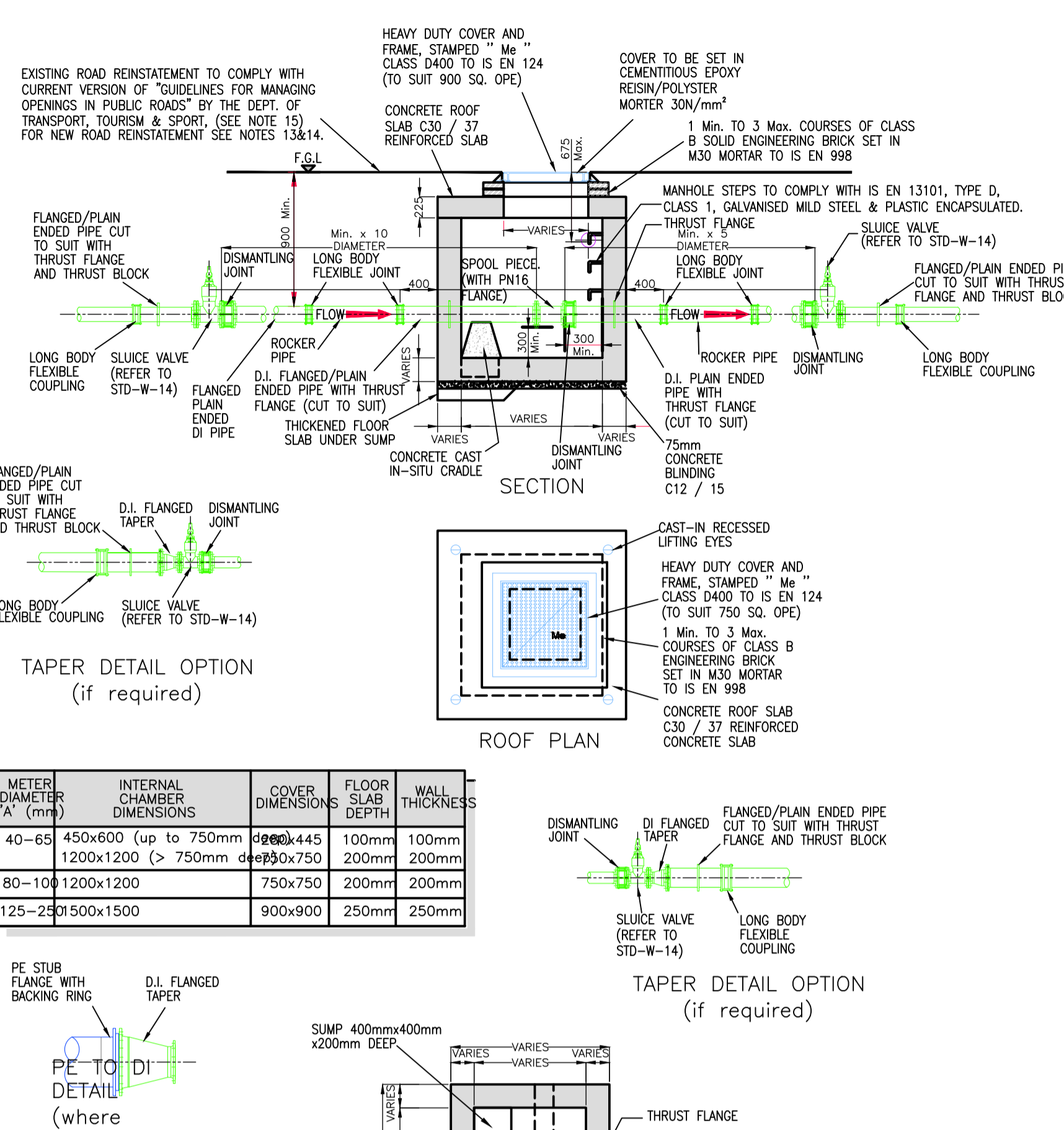
ELECTROMAGNETIC WATER SPOOL PIECE LENGTHS							
Ø mm	DN50	DN80	DN100	DN125	DN150	DN200	DN250
Length mm	200	250	300	350	450		

MECHANICAL WATER METER SPOOL PIECE LENGTHS								
Ø mm	DN40	DN50	DN80	DN100	DN125	DN150	DN200	DN250
Length mm	150	200	250	300	350	450		

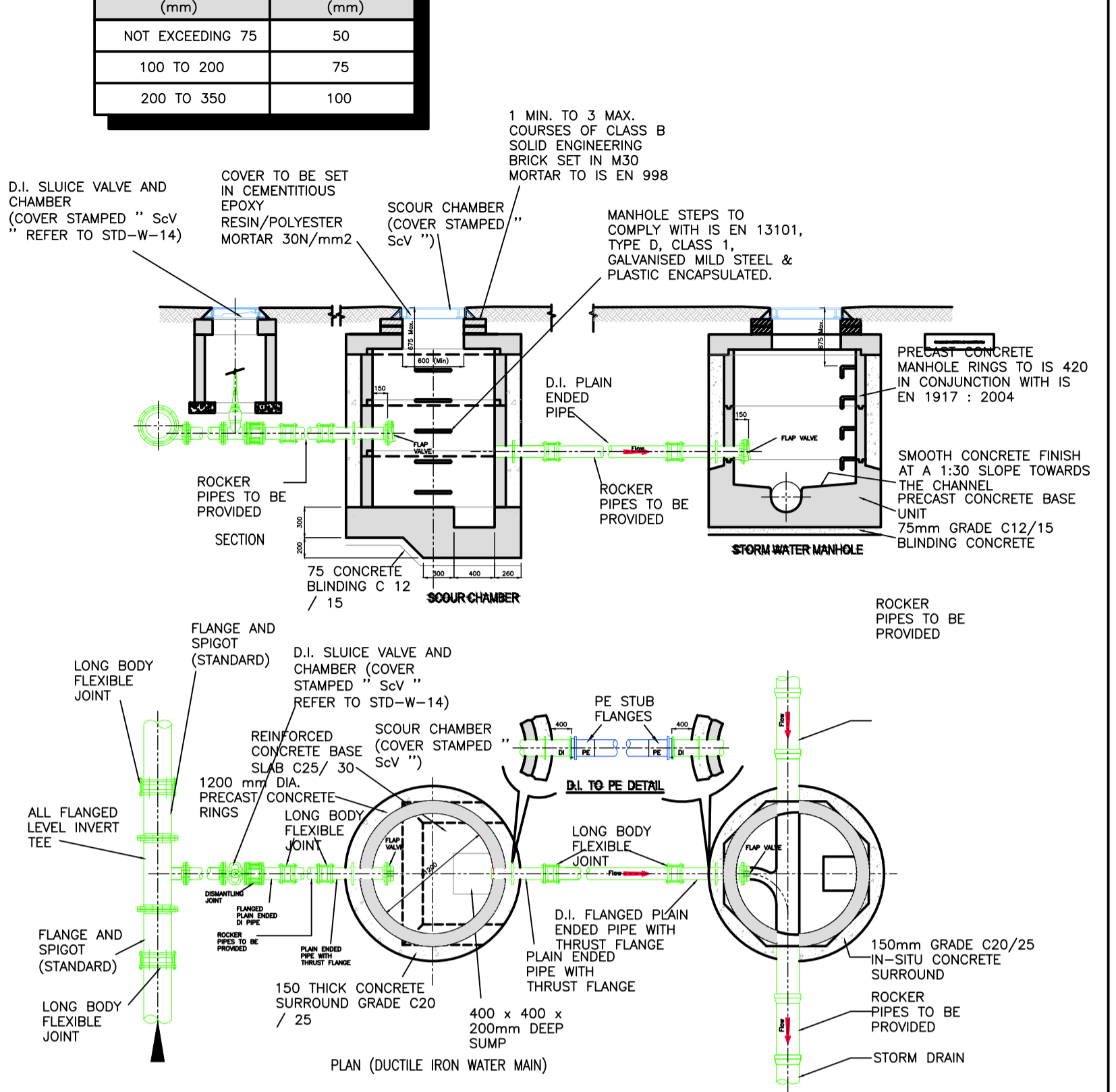
DIAMETER OF WATERMAIN (mm)	DIAMETER OF SPOOL (mm)
NOT EXCEEDING 75	50
100 TO 200	75
200 TO 350	100



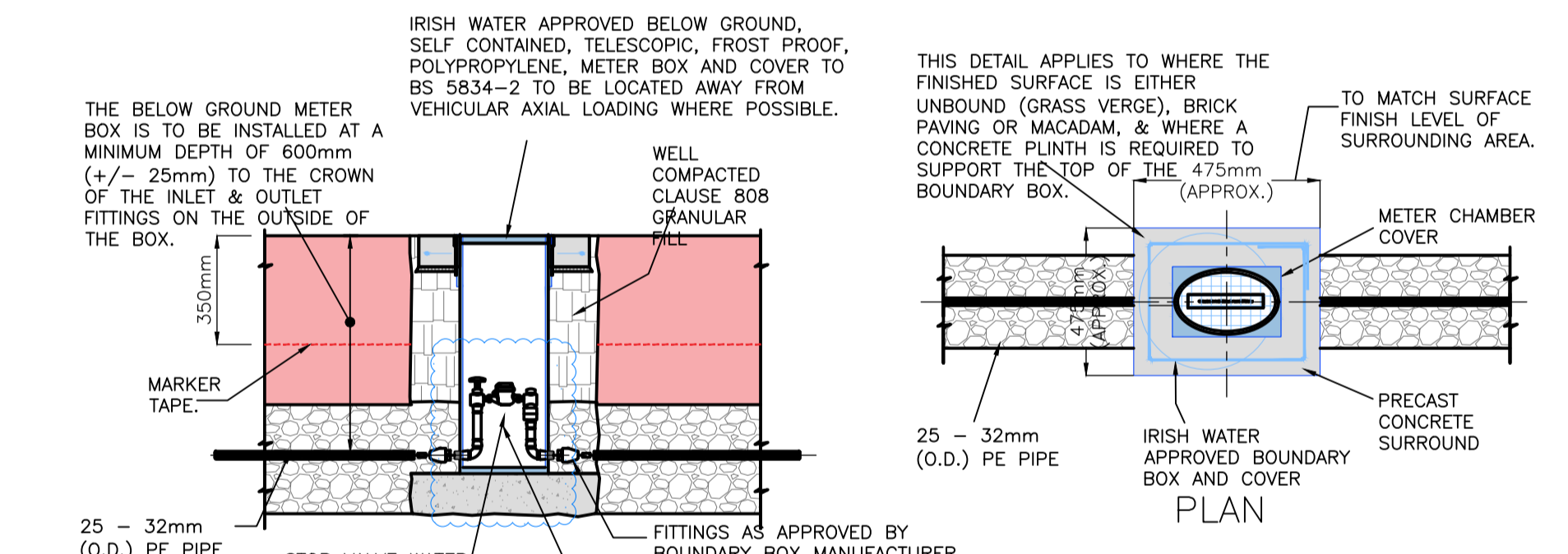
**ELECTROMAGNETIC METER CHAMBER**



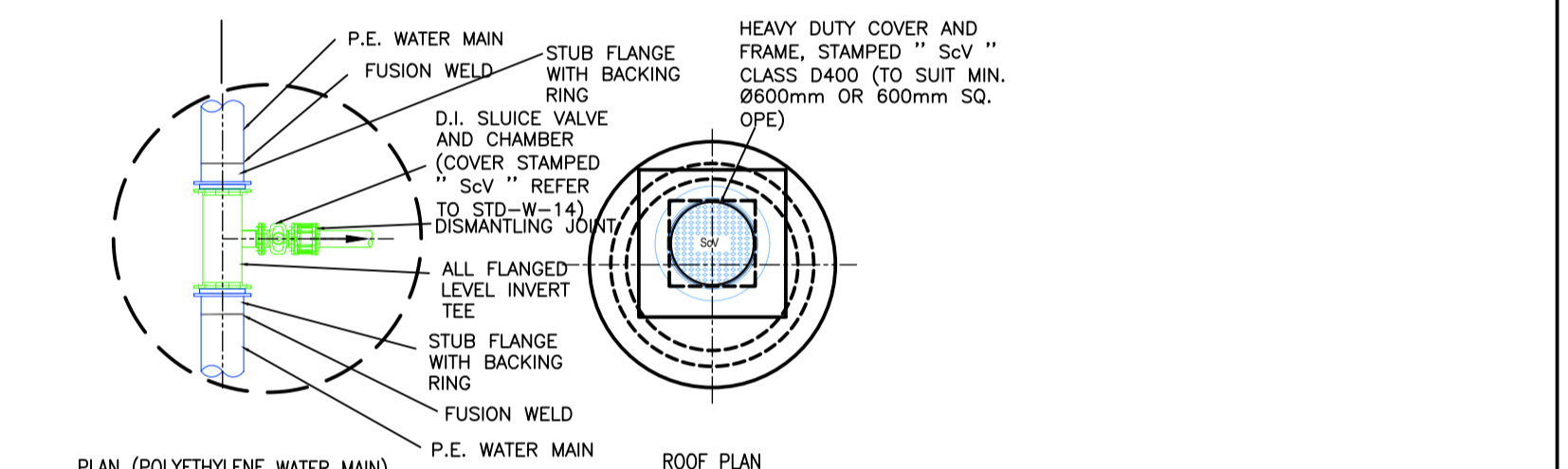
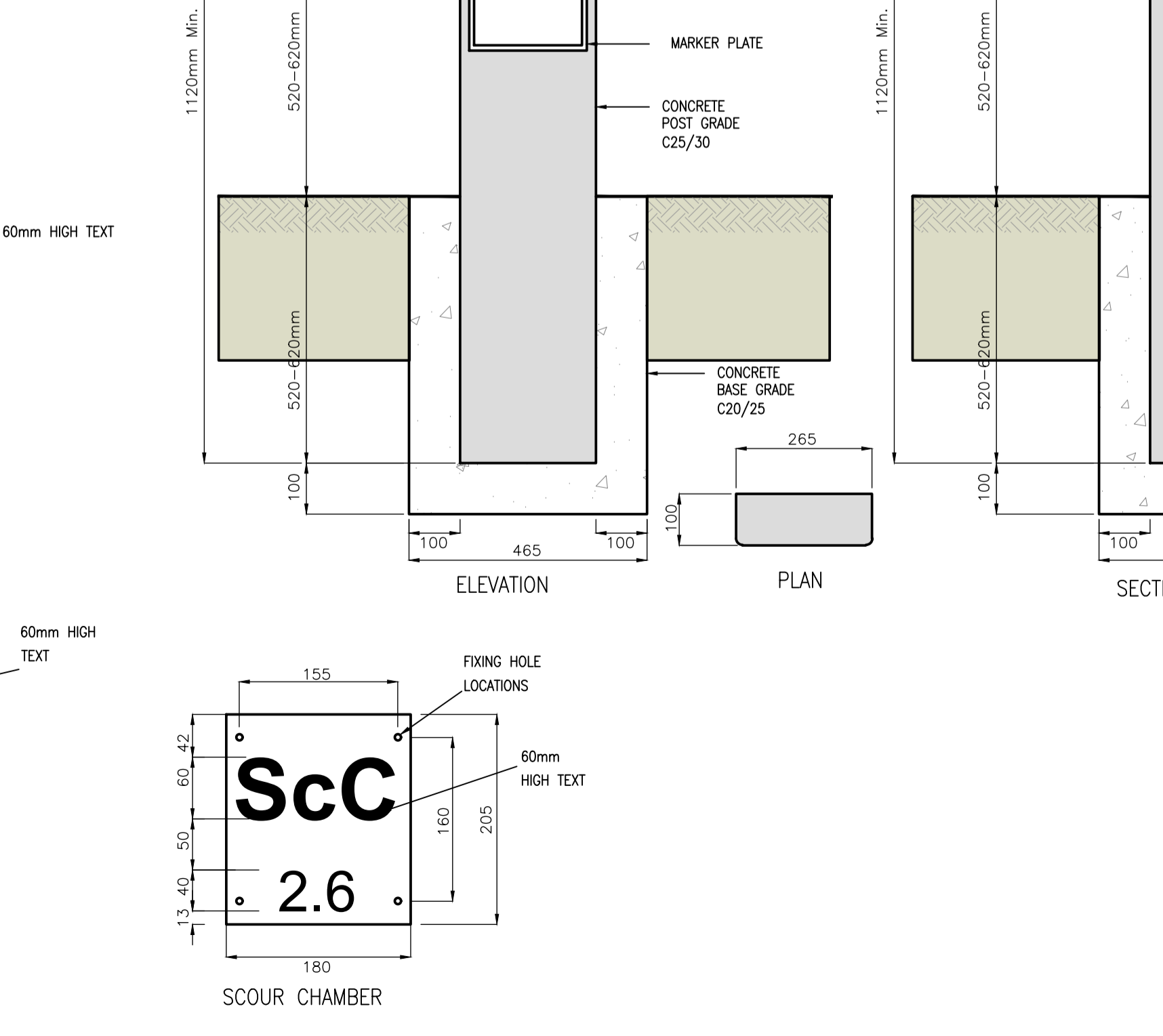
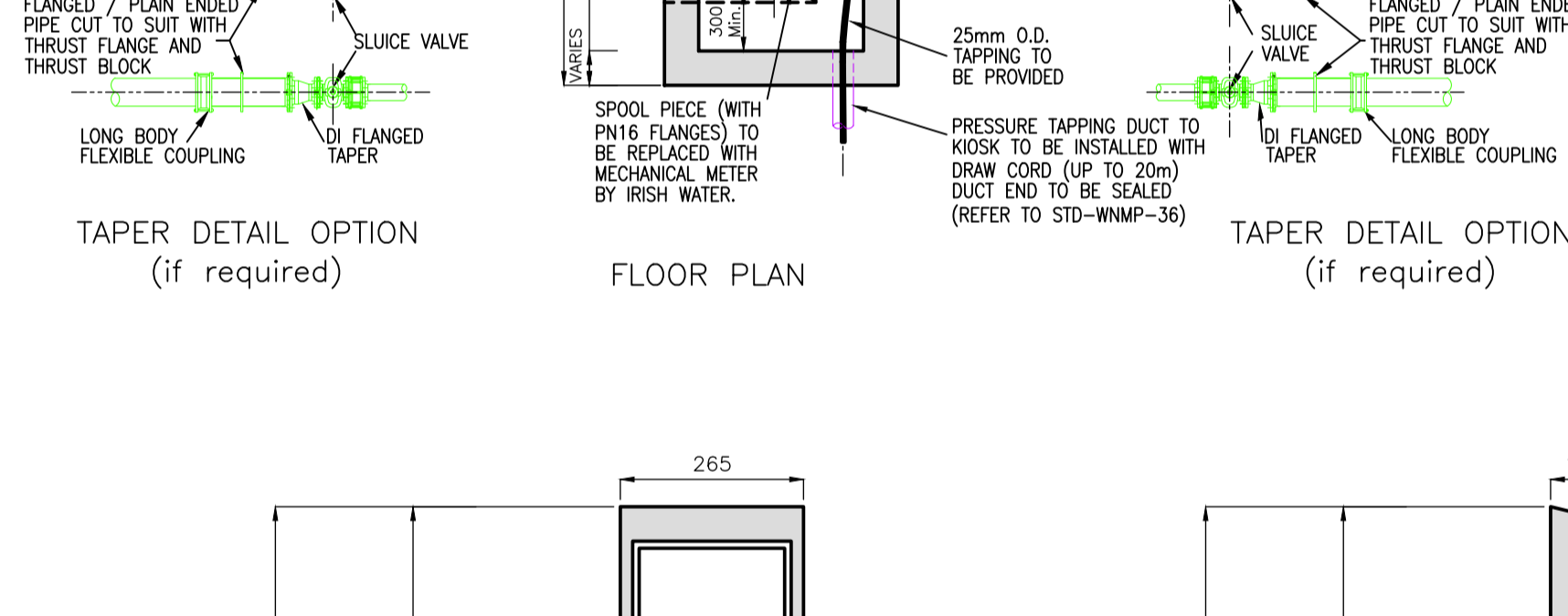
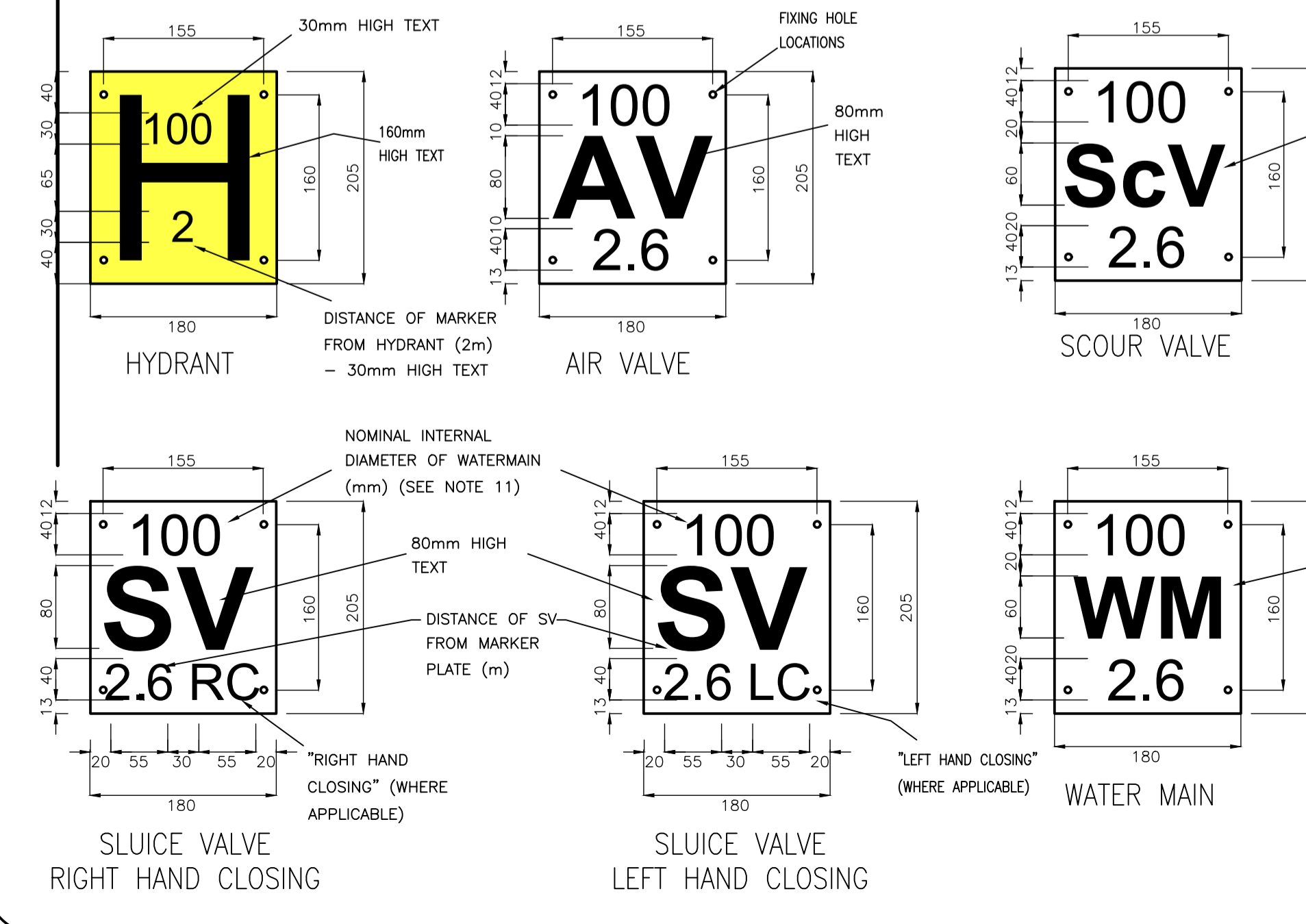
**MECHANICAL METER CHAMBER**



**WATER SCOUR CHAMBER TO STORM SEWER ARRANGEMENTS**



**25-32mm O.D.Ø INLINE WATER METER CHAMBER DETAILS**



**MARKER POSTS / PLATES**

- NOTES:**
- FIGURED DIMENSIONS ONLY TO BE TAKEN FROM THIS DRAWING. DIMENSIONS TO BE CHECKED ON SITE.
  - THIS DRAWING TO BE READ IN CONJUNCTION WITH ALL OTHER ARCHITECTURAL & ENGINEERING DRAWINGS & ALL OTHER RELEVANT DRAWINGS & SPECIFICATIONS.
  - ALL LEVELS RELATE TO O.S. DATUM AT MALIN HEAD. UNLESS NOTED OTHERWISE.
  - WATERMAIN TO BE MDPE-PE 80 EXCEPT UNDER ROADWAYS WHERE DUCTILE IRON IS TO BE USED. COVER TO WATERMAIN TO BE 900mm.
  - THRUST BLOCKS TO BE IN ACCORDANCE WITH IRISH WATER CODE OF PRACTICES.
  - DUCTILE IRON PIPES: SHALL CONFORM TO CI Ø9 OF EN 545. DUCTILE IRON FITTING SHALL BE EITHER CLASS K9 OR K12. DUCTILE IRON AND FITTINGS SHALL BE CEMENT MORTAR LINED WITH 3 SULPHATE RESISTANT CEMENT AND SHALL BE SEALED WITH AND APPROVED BITUMEN OR EPOXY RESIN SEALCOAT.
  - SUCTION VALVES MUST COMPLY WITH THE RELEVANT REQUIREMENTS OF THE DEPARTMENT OF ENVIRONMENT RECOMMENDATIONS FOR SITE DEVELOPMENT WORKS FOR HOUSING AREAS AND LOCAL AUTHORITY SPECIFICATIONS AND IRISH WATER SPECIFICATIONS.
  - VALVES AND HYDRANTS WHEN INSTALLED SHALL BE COVERED WITH APPROVED HEAVY DUTY METAL SURFACE COVERS. THESE COVERS MUST CONFORM WITH THE LOCAL AUTHORITY SPECIFICATIONS.
  - VALVE AND HYDRANT INDICATOR PLATES, COMPLYING WITH B.S.750 SHOULD BE FIXED NOT LESS THAN 3FT. OR MORE THAN 6FT ABOVE GROUND LEVEL NEAR TO THE HYDRANT WHERE NO ADJACENT BOUNDARY EXISTS USE CONCRETE MARKER POSTS.
  - DRAINAGE MUST BE PROVIDED TO ENSURE THAT THE CHAMBERS CANNOT BECOME FLOODED WITH SURFACE OR GROUND WATER.
  - ALL DUCTILE IRON WATERMAIN MUST BE WRAPPED WITH A POLYTHENE 1000 GAUGE SLEEVING.

Rev.	Date	Drawn By	Checked By	Revision
A	11.12.20	BS	SG	Meter details added

Status: FOR PLANNING

Architect: CW O'BRIEN LTD

Project: RESIDENTIAL AT OLD SCHOOL HOUSE CLONSILLA, DUBLIN 15

Drg. Title: TYPICAL WATERMAIN CHAMBERS ARRANGEMENT DETAILS SHEET 2

THIS DOCUMENT IS THE PROPERTY OF DOHERTY FINEGAN KELLY CONSULTING ENGINEERS. THE DESIGN INFORMATION CONTAINED HEREIN IS STRICTLY CONFIDENTIAL. THIS DOCUMENT IS NOT TO BE USED, REPRODUCED, DISCLOSED OR CIRCULATED IN WHOLE OR IN PART WITHOUT THE PRIOR WRITTEN PERMISSION IN EACH INSTANCE OF DOHERTY FINEGAN KELLY CONSULTING ENGINEERS

**DFK**  
**DOHERTY FINEGAN KELLY**  
 DOHERTY FINEGAN KELLY  
 CONSULTING CIVIL & STRUCTURAL ENGINEERS  
 Botanic Court, 30 Botanic Road,  
 Glasnevin, Dublin 9.  
 Tel: (01) 8301852 Fax: (01) 8602265  
 E-Mail: mailroom@dfk.ie

Drawn By: BS	Scale: AS SHOWN
Checked By: CK/SG	Date: 07.12.20
Drg. No.: 19160-13	Rev.: A